



The worldwide STANDARD for home and building control

## *Press release*

Embedded, Smart, Wireless, the great key features of the new Engineering Tools Software: ETS5.

**KNX Association cvba**  
De Kleetlaan 5 bus 11  
B-1831 Brussels-Diegem  
Belgium

Tel.: +32 (0) 2 775 85 90  
Fax: +32 (0) 2 675 50 28

[info@knx.org](mailto:info@knx.org)  
[www.knx.org](http://www.knx.org)

### **The new ETS5: one tool for ALL media**

Brussels, 20th September 2014 – all over the world, building control engineers are using the product and manufacturer-independent Engineering Tool Software (ETS) to increase the energy efficiency of buildings. This standardised tool can be used for the installation of more than 7,000 KNX-certified devices from more than 365 different manufacturers. In order to satisfy the latest technical, economic and global demands, the KNX Association has now completely redesigned its Engineering Tool Software (ETS) and added numerous functions. ETS5 is the first tool suitable for the quick, simple integration of wireless KNX components. Moreover, the database management was considerably simplified, and its new dongle allows greater flexibility in handling projects.

The new ETS5 is the KNX Association's answer to the demand for greater user-friendliness, more powerful technology, and bigger cost savings. The popularity of applications based on bus technology has increased many times over. KNX installations are now more extensive, and functions in commercial as well as intelligent residential buildings have become more diverse. KNX solutions must be able to handle major current challenges such as the need to make buildings as energy-efficient as possible. The new version of the tool offers numerous features for the convenient, cost-effective integration of KNX systems. Its top improvements include:

- Integration of KNX radio frequency (KNX RF) components from a wide range of different manufacturers
- USB dongle for easier handling with 4 GB of storage for user data
- No database, hence faster data imports and exports
- Improved user interface with more room for key functions
- Even more performance when used as a 64-bit application

- ETS5 and the older versions ETS4 and ETS3 can be installed together on the same computer

### **Wireless components now easier to integrate**

With the new ETS5 it is now possible for the first time to work with ALL media without exception: not just wired media (bus line, Powerline and Ethernet/IP), as previously, but now also wireless radio frequency (KNX RF) media. It is therefore possible to use ETS to parameterise and set up KNX RF devices from various manufacturers in exactly the same way as KNX TP, PL and IP devices – a major advantage when upgrading existing buildings with KNX.

### **No database for a leaner, more flexible program**

Numerous improvements have been made to the IT system environment, simplifying installation and making ETS work faster. One key change in this respect in ETS5 is the absence of a database. This speeds up the import and export of the data.

### **Storing the latest project data in a dongle**

Dongle licences are very popular among professionals because they mean that ETS can be used on more than one computer. A new dongle is being launched on the market at the same time as ETS5 that is smaller than the previous dongles and contains 4 GB of storage for user data. This will simplify handling and allow more flexible project administration.

### **64-bit technology makes big projects small**

In contrast to its predecessor, ETS5 can now also function as a 64-bit application. This means it offers full power using all system resources, plus increased speed. The resulting time savings are particularly beneficial in the case of large projects. For the first time ETS5 and the previous versions ETS4 and ETS3 can be installed together on the same computer.

ETS5 is available in three different versions: ETS5 Demo, the free version for mini-projects; ETS5 Lite, the version for small and medium-sized projects; and ETS5 Professional, for projects of all sizes. For more information please visit [www.knx.org](http://www.knx.org).

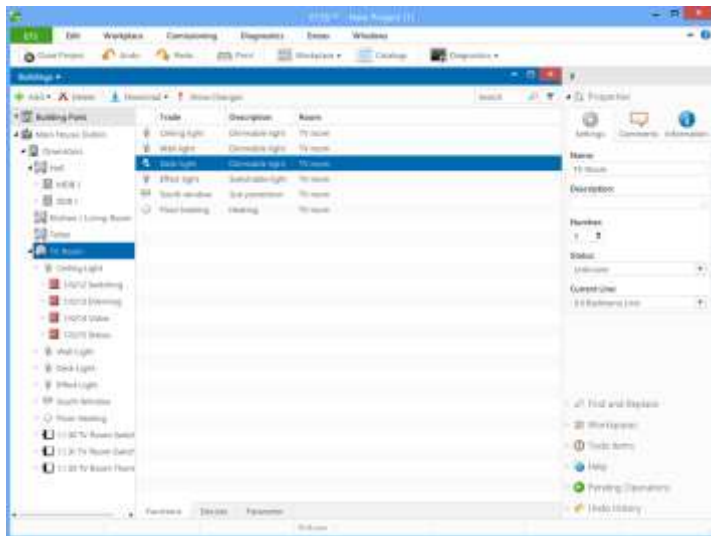


Fig. 1: The ETS5 interface: buildings, devices and group addresses are all visible at a glance for optimised workflows



Fig. 2: The new ETS5 will be available from October 2014.

#### About KNX

**KNX** Association is the creator and owner of the **KNX** technology – the worldwide STANDARD for all applications in home and building control, ranging from lighting and shutter control to various security systems, heating, ventilation, air conditioning, monitoring, alarming, water control, energy management, smart metering as well as household appliances, audio/video and lots more. **KNX** is the worldwide standard for home and building control with a single, manufacturer independent design and commissioning tool (ETS), with a complete set of supported communication media (TP, PL, RF and IP) as well as a complete set of supported configuration modes (system and easy mode). **KNX** is approved as a European (CENELEC EN 50090 and CEN EN 13321-1) and an International standard (ISO/IEC 14543-3). This standard is based upon more than 24 years of experience in the market. More than 365 member companies worldwide from different application domains have almost 7000 **KNX** certified product groups in their catalogues. The **KNX** Association has partnership agreements with more than 40,000 installer companies in more than 125 countries.

[www.knx.org](http://www.knx.org)

For more information / material please contact: [heinz.lux@knx.org](mailto:heinz.lux@knx.org)

Pictures can be downloaded at: [www.knx.org/knx-en/press-room/](http://www.knx.org/knx-en/press-room/)